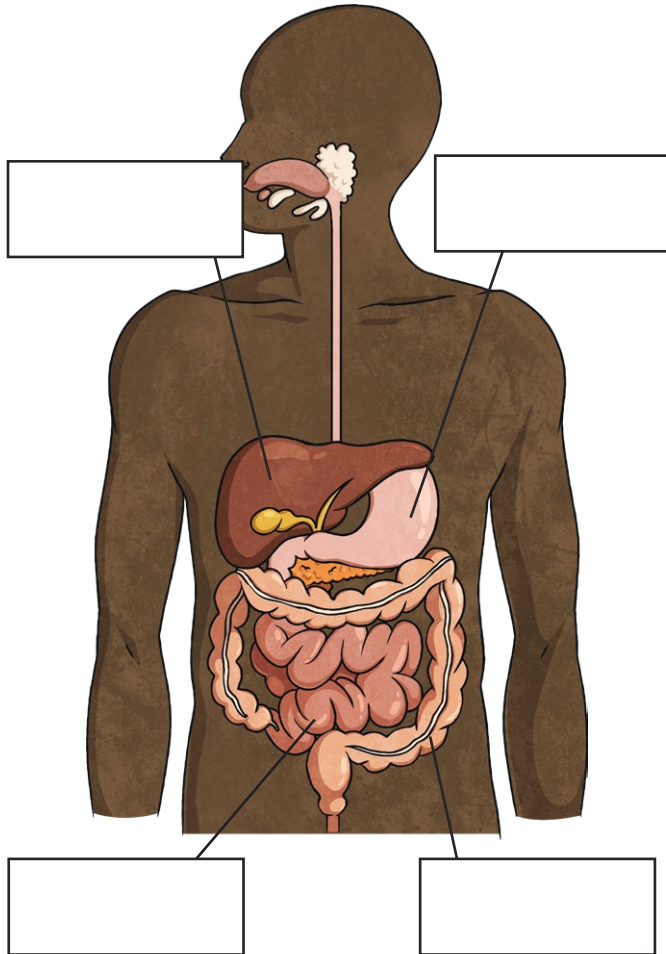


Year 4 Animals Including Humans Revision Mat

Label the parts of the human digestive system.



Match the part of the digestive system to the job that it does.

gall bladder

a muscle where food is broken down by acids and enzymes

oesophagus

stores bile

liver

the tube that connects the mouth to the stomach

stomach

produces bile that helps digestion and absorbs fats

Sequence the following parts correctly to show the order in which they work in the digestive system.

small intestine

rectum

tongue

large intestine

stomach

oesophagus

1. _____
2. _____
3. _____
4. _____
5. _____
6. _____

Read the clues then fill in the missing letters to reveal vocabulary connected to the digestive system.

This produces the substance that softens food in the mouth. s_l_v_r_ g_a_d

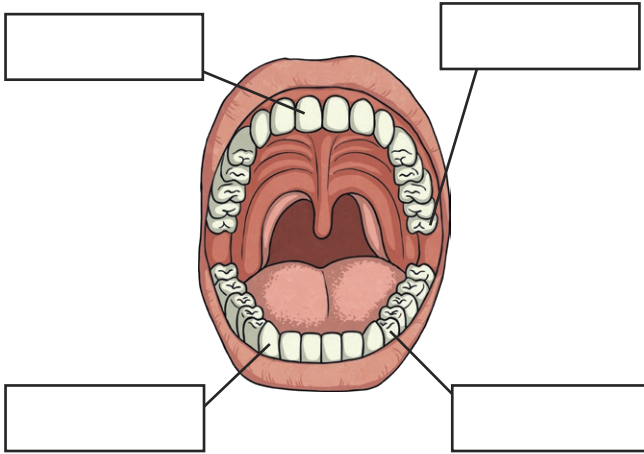
This is made up of gastric juices and broken-down food. c_y_e

An organ in the mouth. _o_g_e

A liquid that helps digestion. _i_e

Year 4 Animals Including Humans Revision Mat

Label the types of teeth in the human mouth.



Draw a line from the type of tooth to its function.

molar	biting and cutting food
premolar	holding and crushing food
incisor	ripping and tearing food
canine	chewing and grinding food

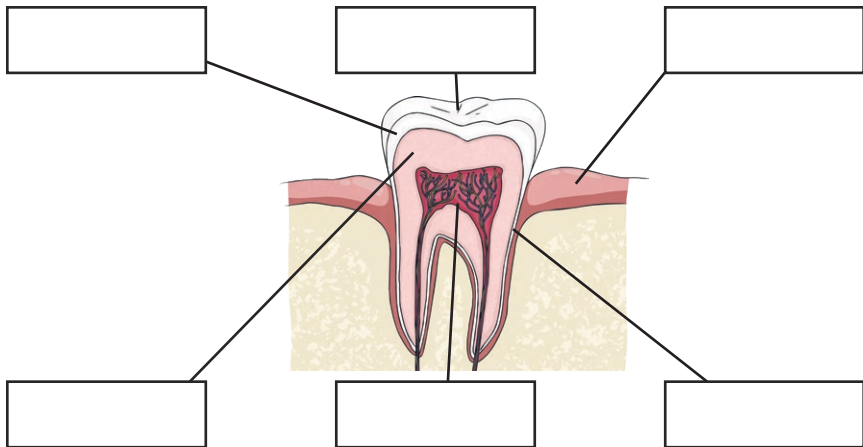
Here is a food chain.



What do the arrows show?

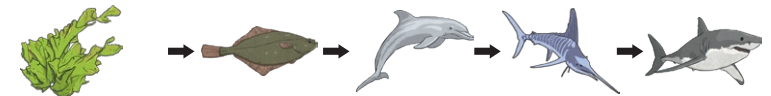
Use the words in the box to label the diagram of a tooth.

enamel crown pulp cementum dentine gum



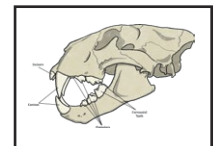
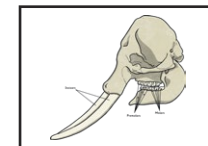
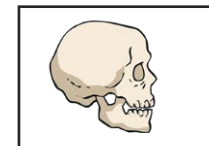
Give three ways you can keep your teeth healthy.

Here is a food chain. Draw different coloured arrows from each label to the living things in the food chain. Some living things may have more than one label.



producer prey predator consumer

Draw a line to match the animal skull with the living thing it belongs to.



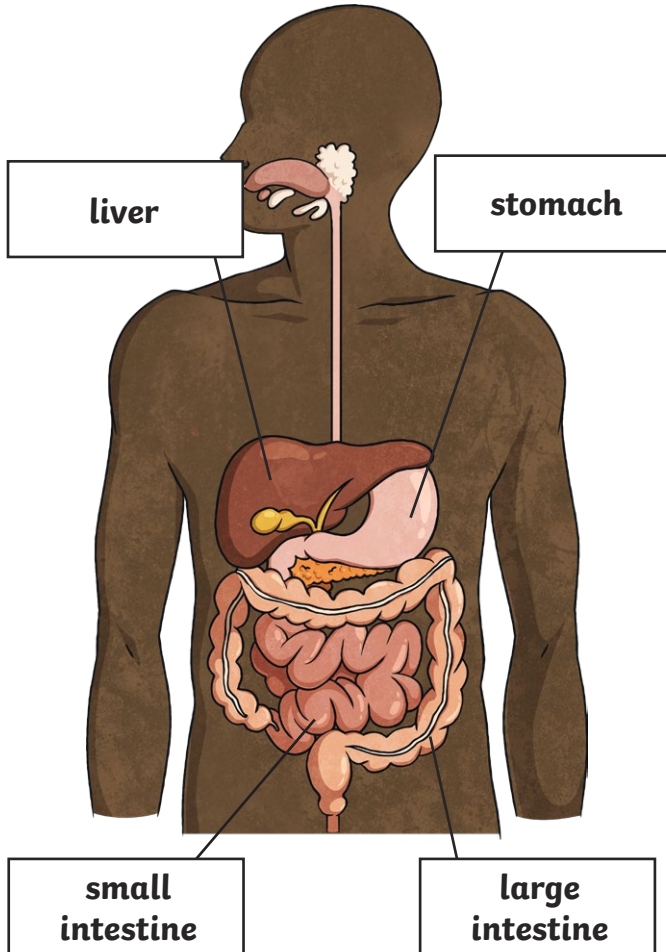
elephant
(herbivore)

human
(omnivore)

lion
(carnivore)

Year 4 Animals Including Humans Revision Mat Answers

Label the parts of the human digestive system.



Match the part of the digestive system to the job that it does.

gall bladder	a muscle where food is broken down by acids and enzymes
oesophagus	stores bile
liver	the tube that connects the mouth to the stomach
stomach	produces bile that helps digestion and absorbs fats

Sequence the following parts correctly to show the order in which they work in the digestive system.

small intestine	rectum	tongue
large intestine	stomach	oesophagus

1. **tongue** _____
2. **oesophagus** _____
3. **stomach** _____
4. **small intestine** _____
5. **large intestine** _____
6. **rectum** _____

Read the clues then fill in the missing letters to reveal vocabulary connected to the digestive system.

This produces the substance that softens food in the mouth. **salivary gland**

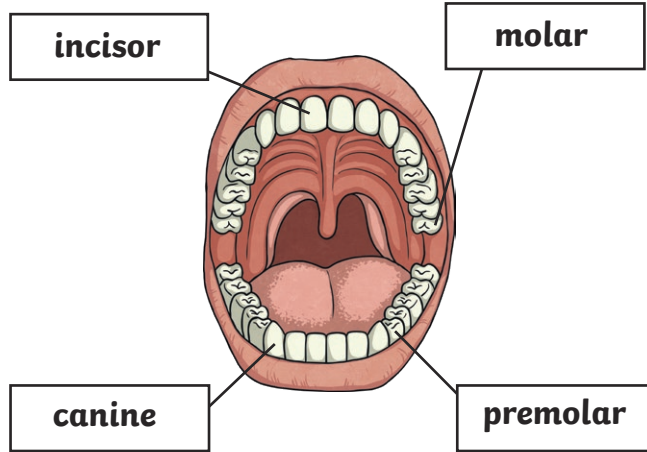
This is made up of gastric juices and broken-down food. **chume**

An organ in the mouth. **tongue**

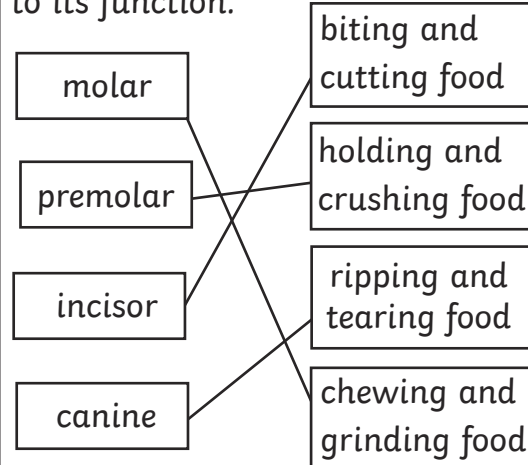
A liquid that helps digestion. **bile**

Year 4 Animals Including Humans Revision Mat Answers

Label the types of teeth in the human mouth.



Draw a line from the type of tooth to its function.



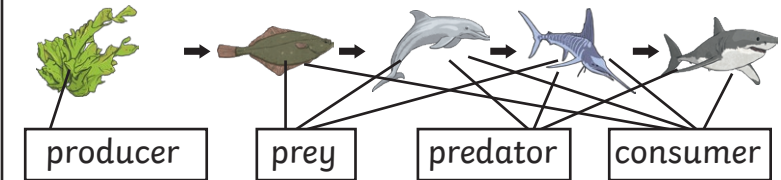
Here is a food chain.



What do the arrows show?

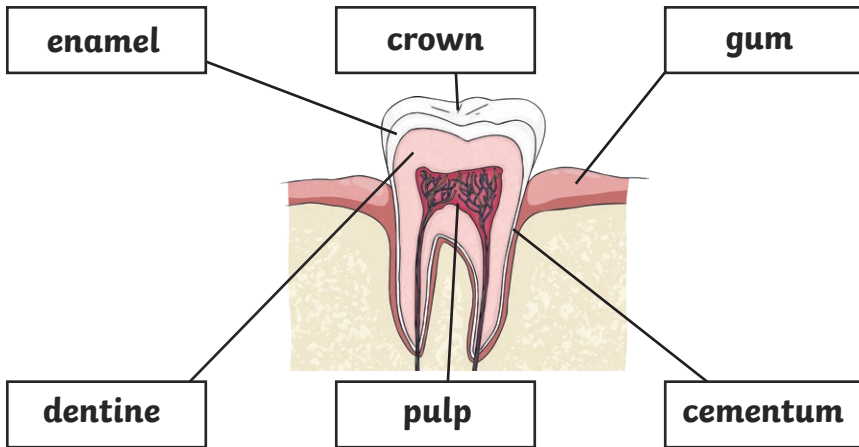
The arrows show the direction of energy in a food chain.

Here is a food chain. Draw different coloured arrows from each label to the living things in the food chain. Some living things may have more than one label.



Use the words in the box to label the diagram of a tooth.

enamel crown pulp cementum dentine gum



Give three ways you can keep your teeth healthy.

Brush your teeth at least twice a day. Use fluoride toothpaste. Limit the intake of sugary foods and drink. Visit the dentist regularly.

Draw a line to match the animal skull with the living thing it belongs to.

